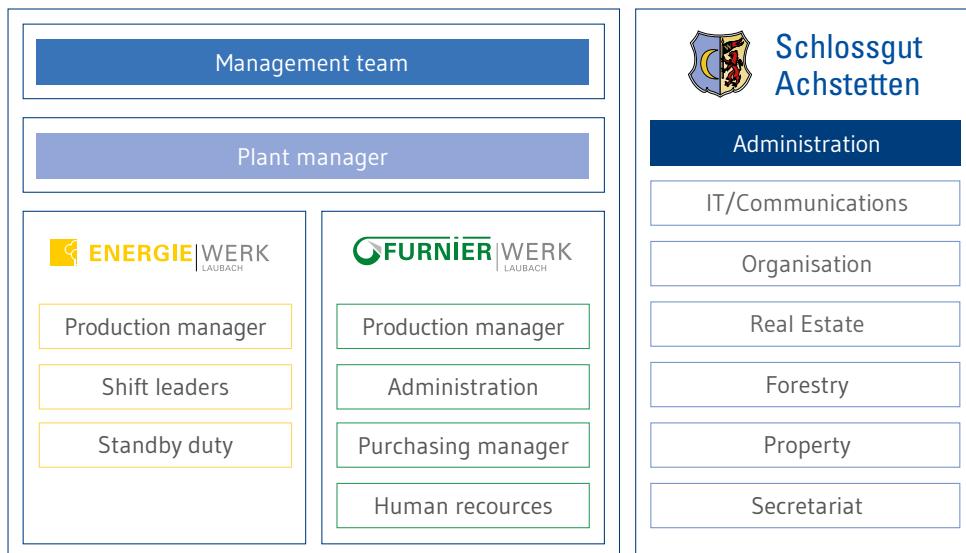
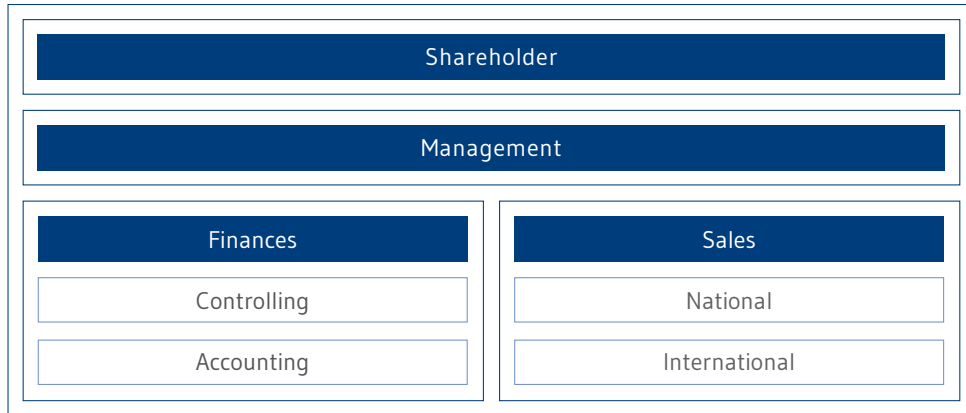




Gräflich Reuttner von Weyl'sche Verwaltung



COMPANY



A tradition of innovation

Wood is an element that features in all companies belonging to our group.

We associate three key notions with this raw material:

1. Sustainability,

because without forests managed according to the rules of sustainability the wood would no longer be available.

2. Versatility,

because there is practically no sector of the modern economy that does not require wood.

3. Constancy,

because the trees supplying us the timber have been growing on the same site for many decades.

HISTORICAL BACKGROUND



1250 - 1750 – To know where you’re going, you have to know where you’ve come from

The family originally stems from what today is Switzerland. The family estate was located there as well as in Alsace. At the end of the 18th century, Beat Konrad Baron Reuttner v. Weyl acquired the Achstetten estate.

1750 - 1817 – Our will to succeed

In 1745 Beat Konrad Baron Reuttner v. Weyl became a Knight of the Teutonic Order and received the authority of the following shires: Commander of the bailiwick of Alsace, Burgundy and Hessa, Imperial Councillor, State and Conference Minister of the Grand Master of the Teutonic Knights, Commander of Marburg, Wetzlar and the Mainau. In 1817 the rank of Count was conferred on the family.

1817 - 1850 – Open for innovation

Count Reuttner supported Mr von Drais in the invention of the so-called “Draisine” which was later to become the bicycle. One of the first prototypes belongs to the Reuttner family and is exhibited at the Deutsches Museum.

1968 - 2009 – Our sustainability

In 1967 the last war refugees had moved out of Achstetten Castel and the renovation of the castle continued including the crypt chapel and other buildings.

Since the 13th century, members of the family have actively participated in social, commercial and political tasks of importance to their community. During this time, many of them were able to achieve successes. Without the constant willingness to be innovative and to improve, this would not have been possible either in the past or today.



Beat Konrad Frhr. Reuttner v. Weyl



SITES

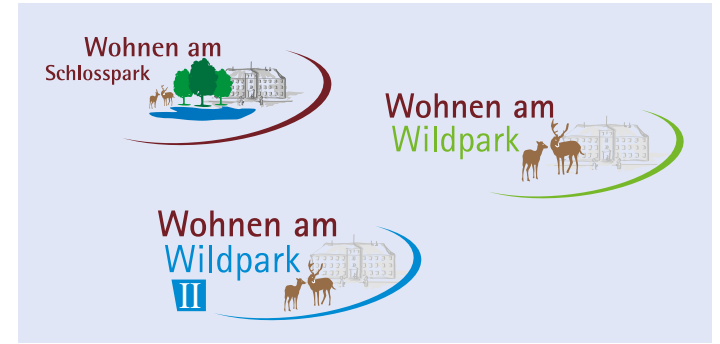
From Achstetten we are running the estate departments; property, forest and real estate. From there we also perform certain organisational duties for the whole group of companies.

Our industrial site is situated in Laubach, around 45 min. by car from Frankfurt airport. There we produce high-quality veneer and supply the town of Laubach with district heating.

South of Berlin – near the lake Schwielochsee – we manage a large forest and shooting estate.



FORESTRY – FOUNDATION – ESTATE



Forestry

With our effective and professional forest administration, we manage our own estate as well as forests belonging to third parties.

Besides the usual range of forestry products (the main trees being spruce and pine), we also offer technical services.

Foundation

The foundation which is without legal capacity was set up by Philip Graf Reuttner to maintain and preserve - regardless of ownership and of whether state subsidies have been granted - listed buildings and monuments of historical significance in Achstetten. These include the castle and grounds, the parish church of Saints Oswald and Agatha and the crypt chapel of Mary's Annunciation.

Estate

Besides preserving historic monuments, we constantly attempt to manage our estate to fulfil modern living standards.

In addition to this, we are permanently involved in projects and development of land, above all in Achstetten, where we provide building land for residential and commercial construction.

FURNIERWERK LAUBACH

www.furnierwerk-laubach.de

Some of the world's finest beech rotary cut veneers

For more than 50 years, rotary cut beech veneer has been produced by the Furnierwerk Laubach. Backed by a workforce of our 75 highly-qualified specialists, we peel around 25.000 cubic metre of beech logs per year.

We are located in Laubach in the middle of the extensive beech forests of the Vogelsberg, approx. 80 km north of Frankfurt.

Companies using peeled beech veneer all over the world value our consistently high quality and punctual delivery times. We are committed to the principle of sustainable development is further reinforced by the fact that we are PEFC and FSC® certified (coc).

Technology

We are proud of our innovative technology and highly-developed production processes. Our veneers stem exclusively from selected local logs. One of our most valuable asset is our specialized workforce that is able to draw on years of experience and expertise. Thanks to their commitment, our products have become synonymous with quality in the global market and remains in constant demand.



Das Zeichen für
verantwortungsvolle
Waldwirtschaft





Rotary cut veneer – a wide range of uses

Veneer is a (thin) sheet of wood peeled from a log using modern machinery. Prior to this, the logs are kept in storage under water and are constantly monitored before being subjected to a special steaming process. Thereafter the sheets of veneer are passed through our dryer before being cut and packed according to individual customer specifications.

We offer three categories of veneer:

- **Industrial veneer**

(for example used in the production of highly densified laminated wood for insulation)

- **Bentwood**

(for example used in furniture production)

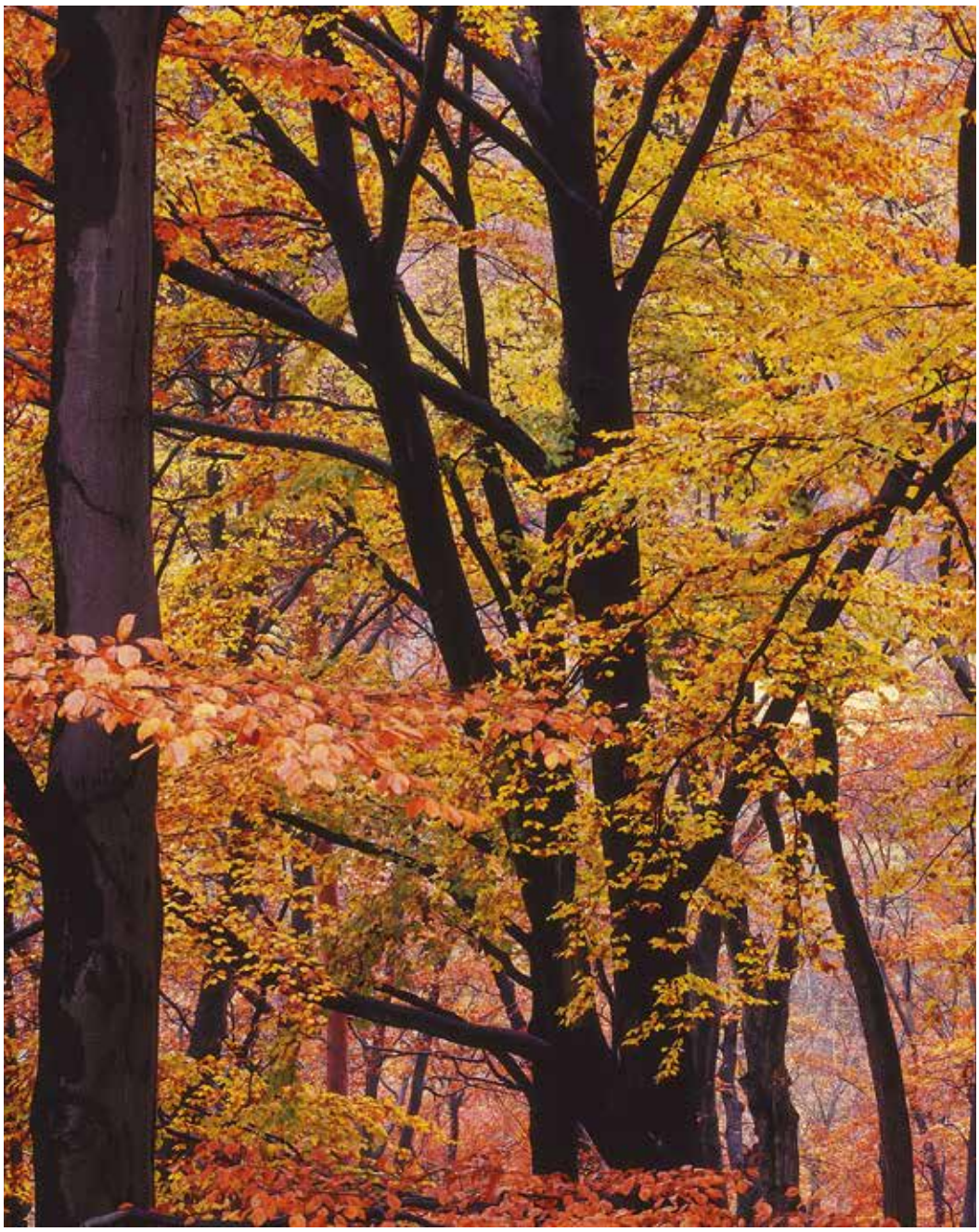
- **Innovative veneers**

(for example used in the production of three-dimensional veneers)

In our opinion, veneer is one of the most precious things that can be made from wood.

FURNIERWERK LAUBACH

www.furnierwerk-laubach.de



Without our beechwood we wouldn't be able to produce veneer of such high quality

At Furnierwerk Laubach we understand quality as the commitment to produce what the customer expects of us. We have agreed with our suppliers that the delivered raw material has the properties necessary for us to fulfil our customers' demands. Supported by modern machinery which we maintain ourselves and constantly re-equip with innovative components, and backed up by a professional dispatch team our entire workforce constantly endeavours to fulfil our customers' quality expectations.

These attributes have made us what we are today – a global player in rotary cut veneer production. We are proud of that!



Global distribution

There is scarcely a continent on which Laubach rotary cut beech veneers are not processed.



Sustainable energy generated from top-quality beechwood



Heating plant

The utility company Energiewerk Laubach generates energy from sustainably managed natural resources. By making efficient use of all the possibilities in the production process, we have taken an important step into the future: The beech we use is processed CO₂ neutrally as a result of which we can make an active contribution towards environmental protection.

Firewood

Our firewood comes from the Vogelsberg region in Hessa. This region is renowned for being one of the best areas to grow beech trees in the world. Dry firewood, such as our Laubacher PREMIUM-HOLZ, not only burns well, it also extends the life of home heating systems (such as fireplaces) and contributes significantly to reducing harmful emissions

We manufacture and supply both large and small volumes and cooperate with an experienced local firewood supplier.





District Heating Laubach: Energy generated locally

Energiewerk Laubach uses fuel from sustainably managed forest to create energy. Supported by modern machinery, we are able to achieve a consistently high level of efficiency while at the same time avoiding potentially environmentally damaging fumes. The hot water is pumped into the towns pipeline system and is made available as district heating to factories, businesses, communal facilities and private households.

Modern utility companies such as the Energiewerk Laubach make energy consumers less dependent on global energy providers while strengthening the region.





Gräflich Reuttner von Weyl'sche Verwaltung

Administration Offices
Schloss / Hauptstraße 9
D-88480 Achstetten
e-mail: verwaltung@reuttner.de
Telephon: +49 (0) 7392-97130